

PRODUCT INFORMATION PACKET

Model No: 056C17G15558

Catalog No: G659A

1 HP Explosion Proof Motor, 1 phase, 1800 RPM, 115/208-230 V, 56H Frame, EPFC
Explosion Proof NEMA Motors



Regal and Marathon are trademarks of Regal Beloit Corporation or one of its affiliated companies.
©2020 Regal Beloit Corporation, All Rights Reserved. MC017097E

REGAL

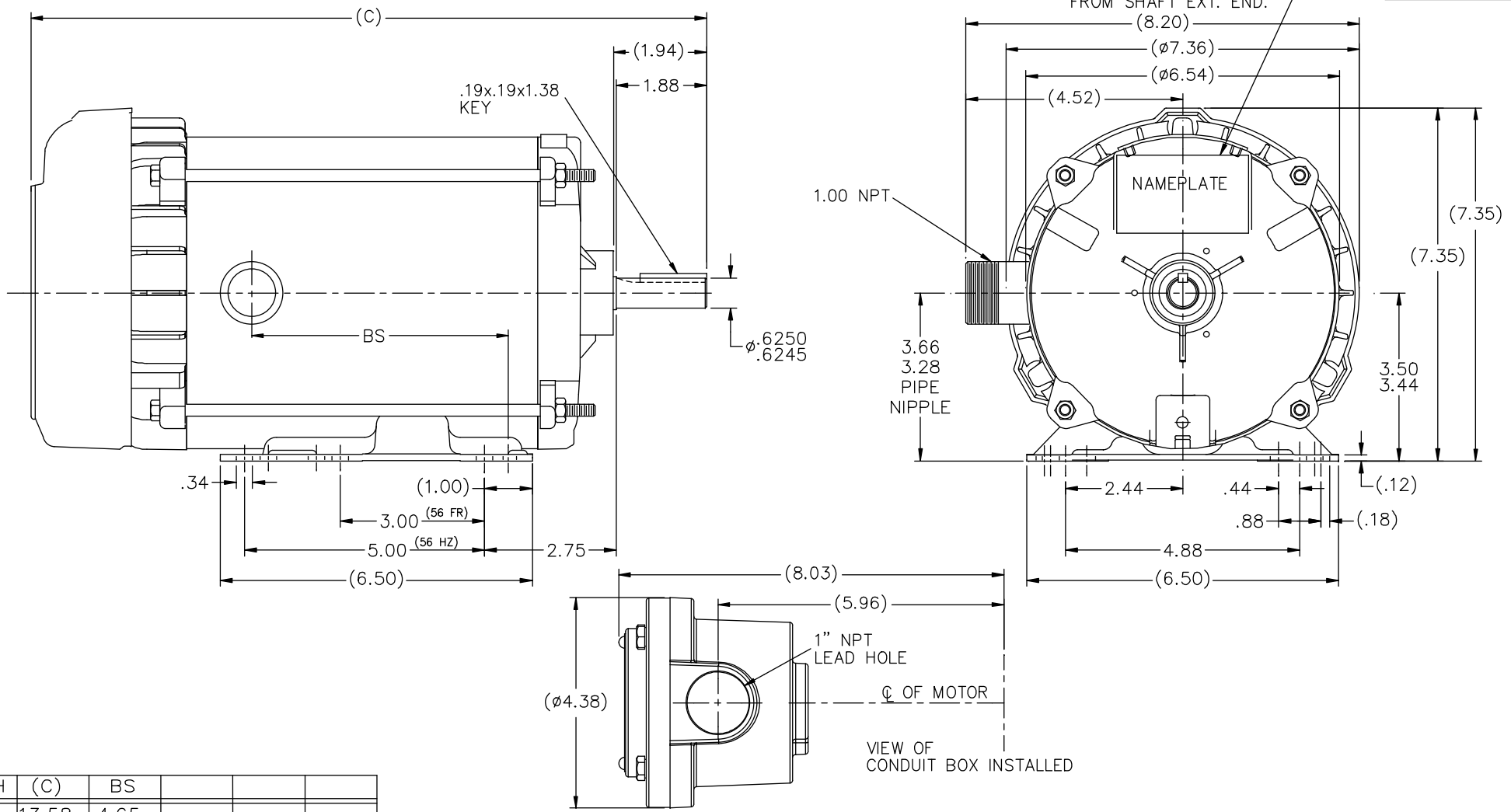


Nameplate Specifications

Output HP	1 Hp	Output KW	0.75 kW
Frequency	60 Hz	Voltage	115/208-230 V
Current	13.4/6.8-6.7 A	Speed	1725 rpm
Service Factor	1	Phase	1
Efficiency	72 %	Power Factor	69.5
Duty	Continuous	Insulation Class	B
Design Code	NO DESIGN CODE	KVA Code	J
Frame	56H	Enclosure	Explosion Proof Fan cooled
Thermal Protection	Automatic	Ambient Temperature	40 °C
Drive End Bearing Size	6205	Opp Drive End Bearing Size	6203
UL	UL Listed And CSA Certified	CSA	Y
CE	N	IP Code	54
Hazardous Location	EXP PROOF CL I GR C&D CL II GR E,F,G T3B		

Technical Specifications

Electrical Type	Capacitor Start Induction Run	Starting Method	Across The Line
Poles	4	Rotation	Selective Counterclockwise
Resistance Main	0 Ohms	Mounting	Rigid base
Motor Orientation	Horizontal	Drive End Bearing	Ball
Opp Drive End Bearing	Ball	Frame Material	Rolled Steel
Shaft Type	NEMA 56	Overall Length	14.08 in
Frame Length	7.31 in	Shaft Diameter	0.625 in
Shaft Extension	1.88 in	Assembly/Box Mounting	F1 ONLY
Connection Drawing	A-102005-84	Outline Drawing	105907-731



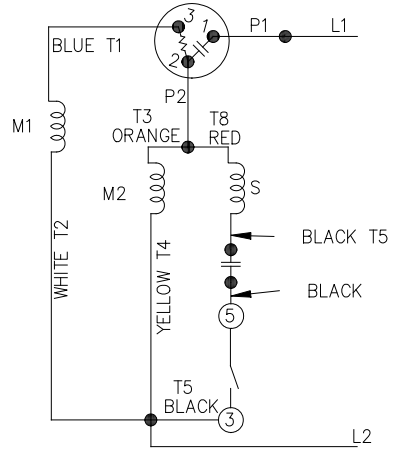
DASH	(C)	BS			
681	13.58	4.65			
731	14.08	5.15	SHOWN		
781	14.58	5.65			
831	15.08	6.15			
881	15.58	6.65			
931	16.08	7.15			
981	16.58	7.65			

				TOLERANCES UNLESS SPECIFIED		MARATHON ELECTRIC	DRAWN RAD 12-07-07	
				DEC.	INCHES		CHK	VL 12-07-07
				.X	±.1		APPD	RAD 12-07-07
				.XX	±.03	TITLE	SCALE	1=2
2	COND. BOX INSTALLED VIEW UPDATED PER ECR-0044571	UD	10/16/13	ST	.XXX	±.005	REF	
1	REVISED BASE & BRACKET	08-1256	RJW 03-25-2008	ML	.XXXX	±.0005	FMF	
NO.	REVISION	BY & DATE	CHK	ANG	FINISH		PREV	
					RFP	CAD FILE 105907	SIZE	DRAWING NO. PAGE OF REV.
					DIST	WP	B	105907 2

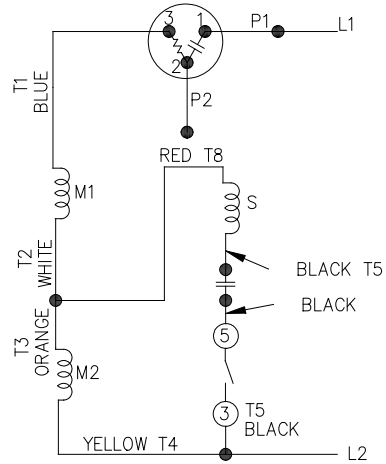
THIS DRAWING IN DESIGN AND DETAIL IS OUR PROPERTY AND MUST NOT BE USED EXCEPT IN CONNECTION WITH OUR WORK ALL RIGHTS OF DESIGN AND INVENTION ARE RESERVED THIS IS AN ELECTRONICALLY GENERATED DOCUMENT - DO NOT SCALE THIS PRINT

102005-84

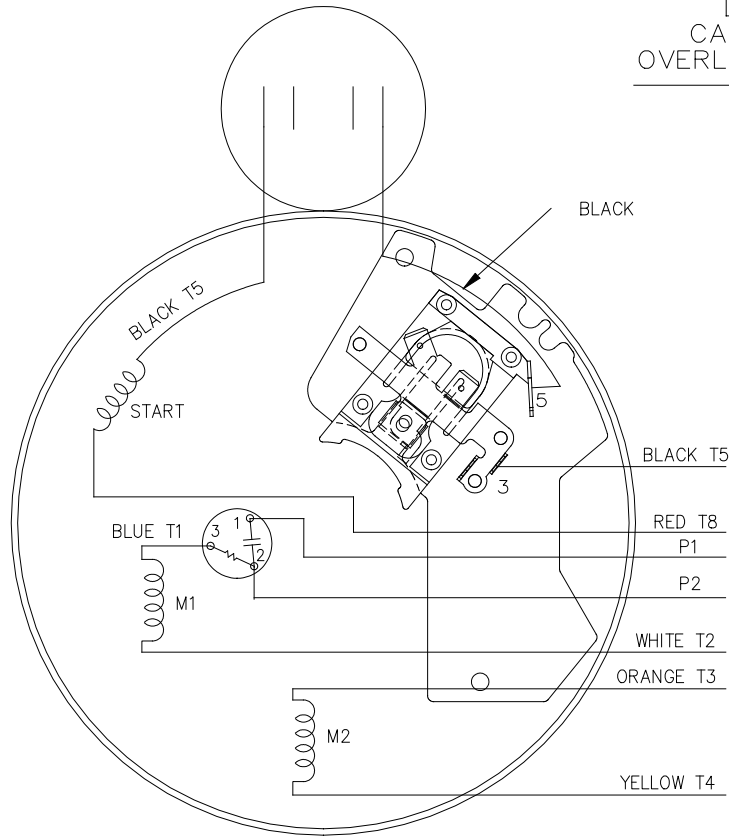
LOW VOLTAGE - C.C.W.



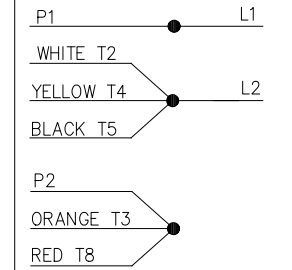
HIGH VOLTAGE - C.C.W.



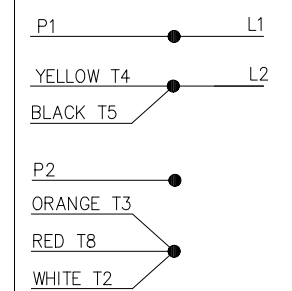
DUAL VOLTAGE
CAPACITOR START
OVERLOAD SELECT ROT.



LOW VOLT. - C.C.W. ROT.



HIGH VOLT. - C.C.W. ROT.



FOR C.W. ROTATION
EITHER VOLTAGE
INTERCHANGE RED(T8)
WITH BLACK(T5) LEAD

NO.	REVISION	BY & DATE	CHK	ANG	TOLERANCES UNLESS SPECIFIED		REGAL™ Regal Beloit America, Inc.	DRAWN PGK 07-16-1996	
					DEC.	INCHES			
5	UPDATED TEMPLETE	MVG 12/11/2017	PVR	.X	±.1			CHK MRB 07-18-1996	
4	REV'D CONNECTION TO MATCH ROTATION ISAAC 07-2021	JJB 09/05/2007	ML	.XX	±.02		TITLE CONNECTION DIAGRAM	APPD GK 07-18-1996	
3	ADDED T NO.'S MU16064	MH 08-09-1997		.XXX	±.005			SCALE 5=8	
2	REDRAWN ON CADD, NO CHANGES	PGK 07-18-1996		.XXXX	±.0005		MAT'L.	REF	
				CHK	ANG	±7'30"	FINISH	PREV	
THIS DRAWING IN DESIGN AND DETAIL IS OUR PROPERTY AND MUST NOT BE USED EXCEPT IN CONNECTION WITH OUR WORK ALL RIGHTS OF DESIGN AND INVENTION ARE RESERVED THIS IS AN ELECTRONICALLY GENERATED DOCUMENT - DO NOT SCALE THIS PRINT							RFP	CAD FILE 102005_84	SIZE A
							DIST WP		DRAWING NO. 102005-84
									PAGE OF 5
									REV. 5



P.O. BOX 8003
WAUSAU, WI 54401-8003
PH. 715-675-3311

CONN. DIAGRAM: A-102005-84
OUTLINE: 105907-731
WINDING #: ZC407 R1 3

MODEL #: 56C17G15558 A
MOUNTING: F1 ONLY

TYPICAL MOTOR PERFORMANCE DATA

HP	KW	SYNC. RPM	F.L. RPM	FRAME	ENCLOSURE	KVA CODE	DESIGN
1	0.75	1800	1725	56H	EPFC	J	NO DESIGN CODE

PH	HZ	VOLTS	AMPS	START TYPE	DUTY	INSL	S.F.	AMB°C
1	60	115/208-230	13.4/6.8-6.7	ACROSS THE LINE	CONTINUOUS	B3	1.0	40

FULL LOAD EFF:	72	3/4 LOAD EFF:	70	1/2 LOAD EFF:	64.3	GTD. EFF		ELEC. TYPE
FULL LOAD PF:	69.5	3/4 LOAD PF:	60.5	1/2 LOAD PF:	49	66	CAP START	IND RUN

F.L. TORQUE	48.2	OZ-FT	69.4 / 34.7	L.R. TORQUE	145	OZ-FT	0 %	B.D. TORQUE	122	OZ-FT	- %	F.L. RISE°C	70
-------------	------	-------	-------------	-------------	-----	-------	-----	-------------	-----	-------	-----	-------------	----

SOUND PRESSURE @ 3 FT.	-	DBA	-	DBA	0	LB-FT^2	-	LB-FT^2	-	SEC.	-	SAFE STALL TIME		STARTS / HOUR		APPROX. MOTOR WGT	36	LBS.
------------------------	---	-----	---	-----	---	---------	---	---------	---	------	---	-----------------	--	---------------	--	-------------------	----	------

*** SUPPLEMENTAL INFORMATION ***

DE BRACKET TYPE	ODE BRACKET TYPE	MOUNT TYPE	ORIENTATION	SEVERE DUTY	HAZARDOUS LOCATION	DRIP COVER	SCREENS	PAINT
STANDARD	STANDARD	RIGID	HORIZONTAL	FALSE	EXP PROOF CL I GR C&D CL II GR E,F,G T3B	FALSE	NONE	GRAY (POWDER)

BEARINGS		GREASE	SHAFT TYPE	SPECIAL DE	SPECIAL ODE	SHAFT MATERIAL	FRAME MATERIAL
DE	ODE						
BALL	BALL	POLYREX EM	STANDARD 56	NONE	NONE	1144 STRESSPROOF (C-223)	ROLLED STEEL
6205	6203						

THERMO-PROTECTORS						THERMISTORS	CONTROL	SPACE HEATERS
THERMOSTATS	PROTECTORS	WDG RTDS	BRG RTDS			NONE	FALSE	NONE
NONE	AUTOMATIC	NONE	NONE					NONE

INVERTER TORQUE: NONE
INV. HP SPEED RANGE: NONE

ENCODER: NONE
NONE NONE
NONE NONE PPR

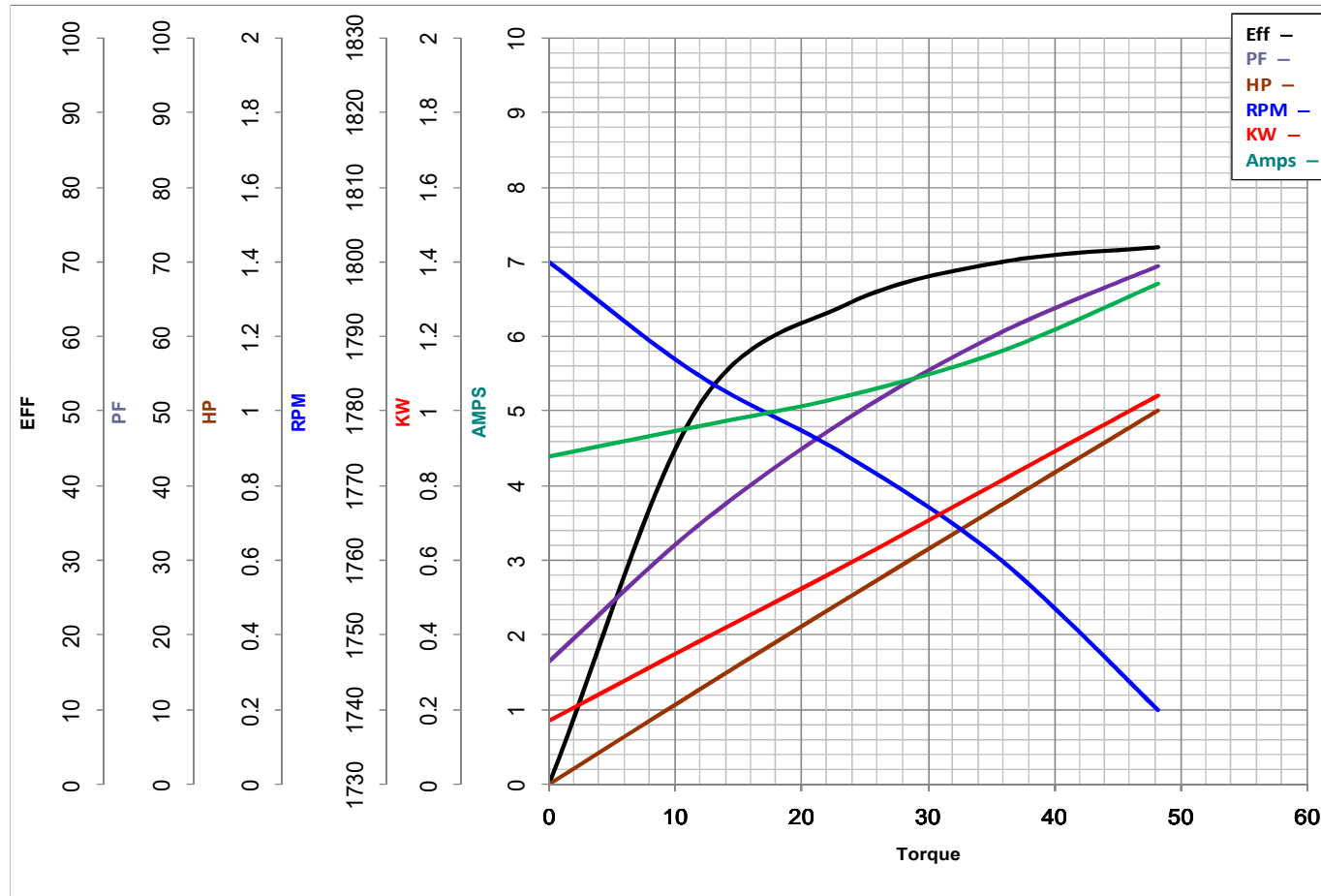
BRAKE: NONE NONE
NONE P/N NONE
NONE NONE
NONE FT-LB NONE V NONE HZ

S
E
T
O
N
*



MARATHON ELECTRIC CORPORATION
TYPICAL PERFORMANCE CURVE for AC MOTOR

Customer _____ Curve at 230 Volts HP 1.00 PHASE 1
60 HZ
1 HP VOLTS 115/208-230
 Model No 56C17G15558
 Catalog No G659A HZ 60 RPM 1725



				Torque in Oz.Ft	
FL TORQUE	<u>48.2</u>	Oz.Ft	FL AMPS	<u>13.4/6.8-6.7</u>	
BD TORQUE	<u>122.0</u>	Oz.Ft	PU TORQUE	<u>101.0</u>	Oz.Ft
LR TORQUE	<u>145</u>	Oz.Ft	LR AMPS	<u>34.7</u>	
WINDING	ZC407-3		Date	11/6/2018	